

# ASSEMBLY MANUAL

## NINA BUFFET

---



### IMPORTANT INFORMATION BEFORE STARTING ASSEMBLY:

The assembly must be carried out by at least 3 people.

Do not place glass panes on unprotected hard surfaces, such as ceramic floors, iron, etc., as they may crack.

Wooden shims are used to protect and level the modules, and more than one shim can be used at a time.

Small gaps between the metal and the glass are normal, as they allow for the assembly of the piece!

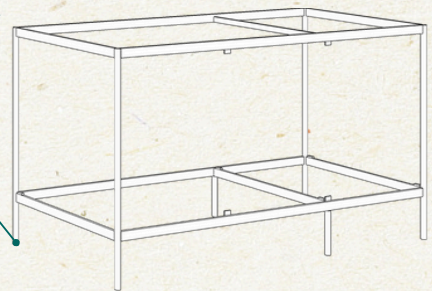
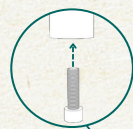
### ASSEMBLY KIT

- Assembly Manual QR Code
- Handling and Cleaning Manual
- Wooden wedges
- PVC wedges
- Door hinges
- Leveling feet

### STEP BY STEP

**1.** Screw the leveling feet onto the metal frame.

Leveling foot



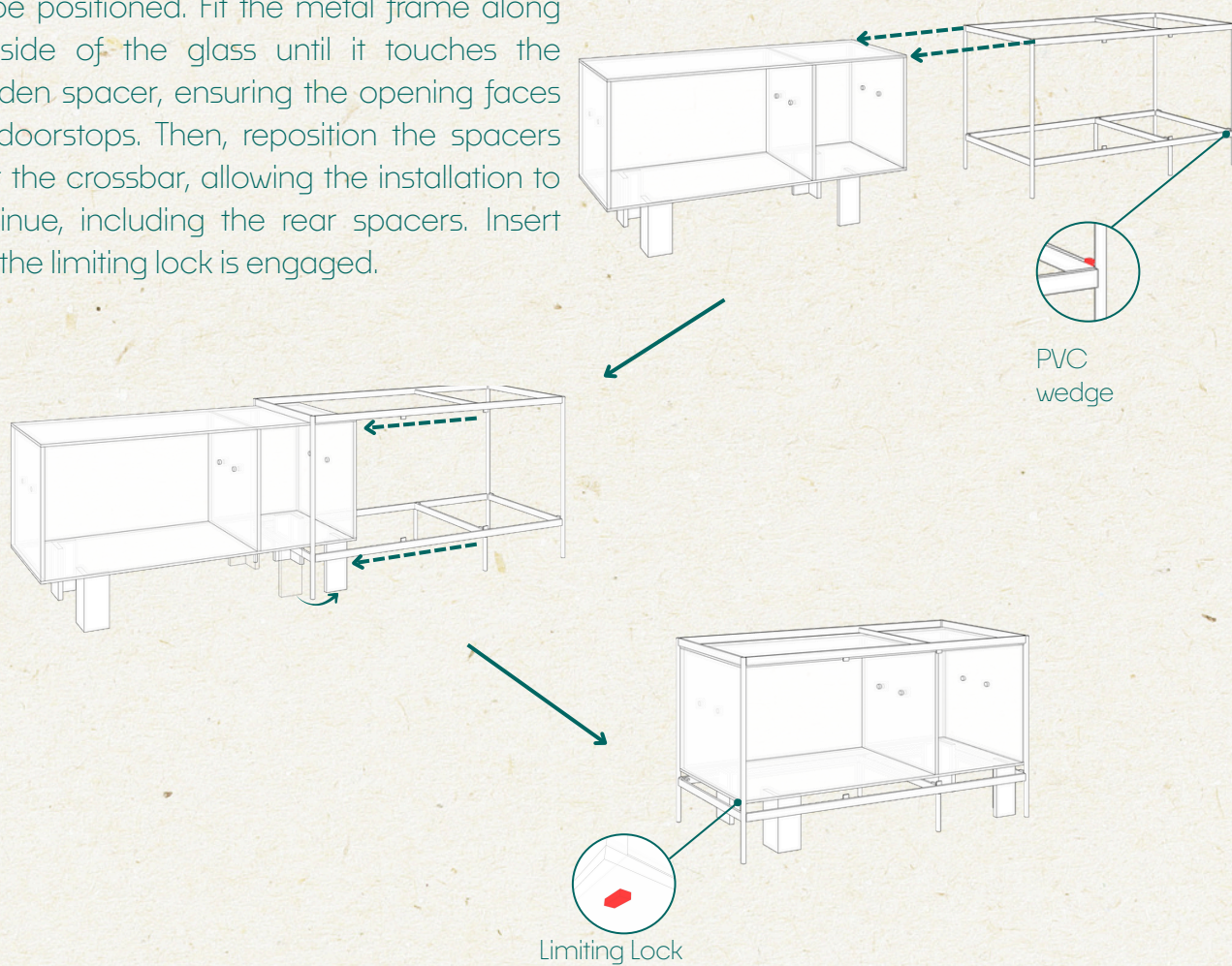
**2.** Use wooden wedges to raise the glass buffet frame, ensuring even spacing on the sides to allow for precise and secure fitting of the metal frame later.



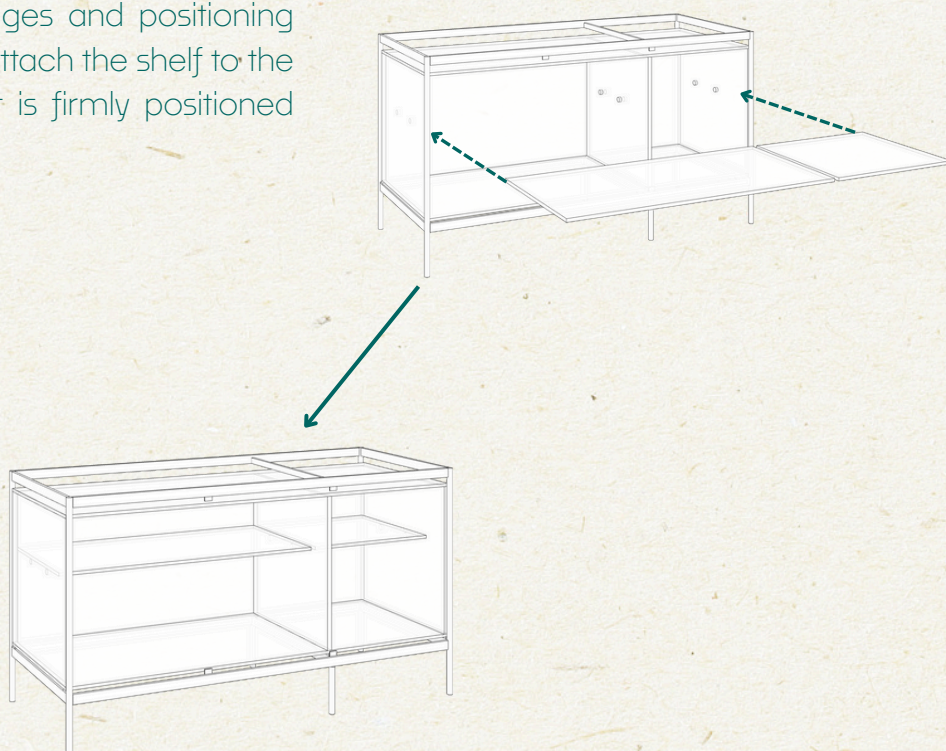
Wooden wedge



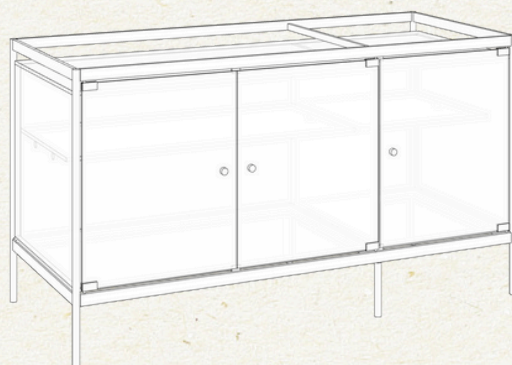
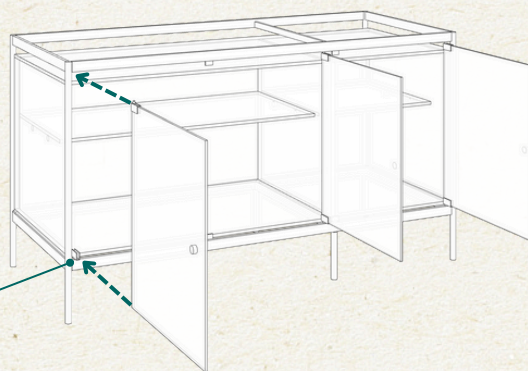
- 3.** Place the PVC spacers where the glass base will be positioned. Fit the metal frame along the side of the glass until it touches the wooden spacer, ensuring the opening faces the doorstops. Then, reposition the spacers after the crossbar, allowing the installation to continue, including the rear spacers. Insert until the limiting lock is engaged.



- 4.** After removing the wedges and positioning the base on the frame, attach the shelf to the supports, making sure it is firmly positioned and level.



5. Attach the hinged doors by first inserting the pin into the top hole and then aligning it with the lower hinge that is already fixed to the frame. Tighten the screws to ensure the glass does not slip off the hinge.



6. Position the glass top on the frame, ensuring it is properly centered.

